

The background features a dark, moody landscape with a prominent mound of vibrant green moss. Two small, white mushrooms with thin stems and conical caps are positioned on the peak of the mossy mound. The background is a deep blue with soft, out-of-focus light spots (bokeh) in shades of cyan and white, creating a dreamlike, ethereal atmosphere. The overall color palette is dominated by blues, greens, and whites.

ENVIRONMENTAL LEMPATHY

Lisa Hall

Ralph Lumbres

Klara Lucznik

OVERVIEW

- Reframing the ecological crises
- Workshop design: How to cultivate more-than-human communities
- Implementation



REFRAMING THE PROBLEM:



Loss of biodiversity:

- will undermine 80% of the SDGs targets
- IPBES calls for system-wide reorganization across technological, economic and social factors, including *paradigms, goals and values*.



‘steering away from the current limited paradigm of economic growth’



more traditional ways of relating: including respect, protection and in connection with nature



A LARGER COMMUNITY OF LIFE ON EARTH

Older cultures engage nonhuman life in ‘social relationships’

- Developing practices which tend to regulate behaviours and excess, ensuring dynamic abundance.
- Evidenced in frequent overlaps between societies who hold an inclusive view of social relationships and biodiversity hotspots.

Sian Sullivan, ‘Wild game or soul mates’, Landscape, Wilderness and the Wild conference, (Newcastle University, March 2015).p.13.

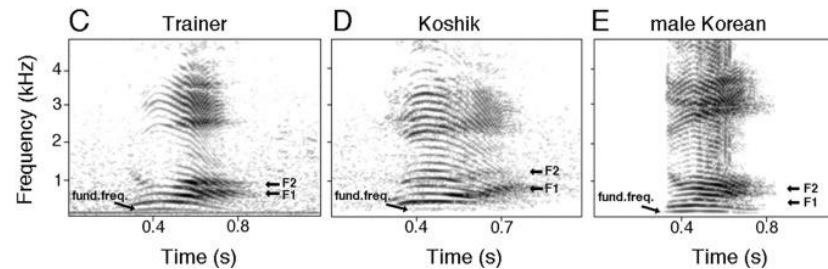
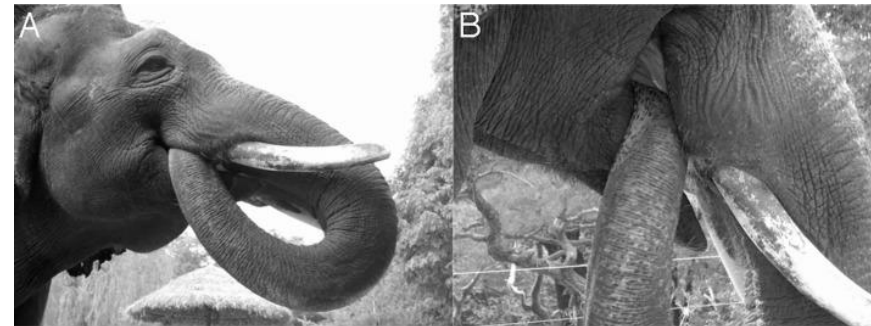
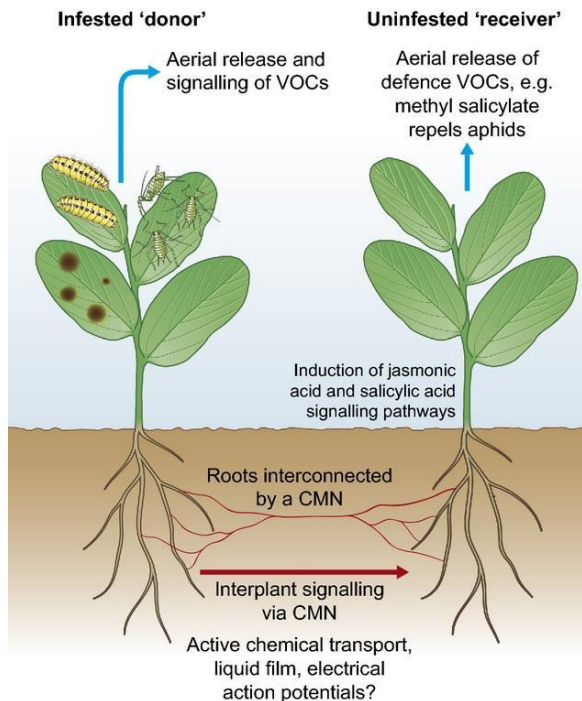
Sian Sullivan, ‘What’s ontology got to do with it?’, in *Routledge International Handbook of Environmental Anthropology*, ed. by H. Koppina and E. Shoreman-Quimet. (London: Routledge, 2016). pp. 155-169 (p.164).



RECENT SCIENTIFIC DISCOVERIES OF NONHUMAN SOCIALITY AND SUBJECTIVE AGENCIES

Tree and plant agency and communication

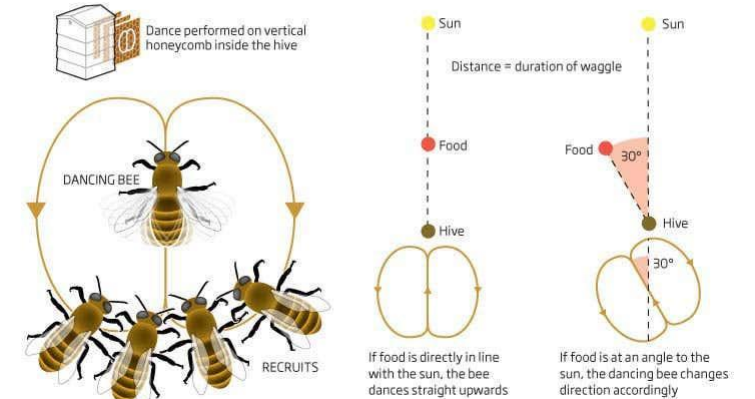
Animal agency and communication



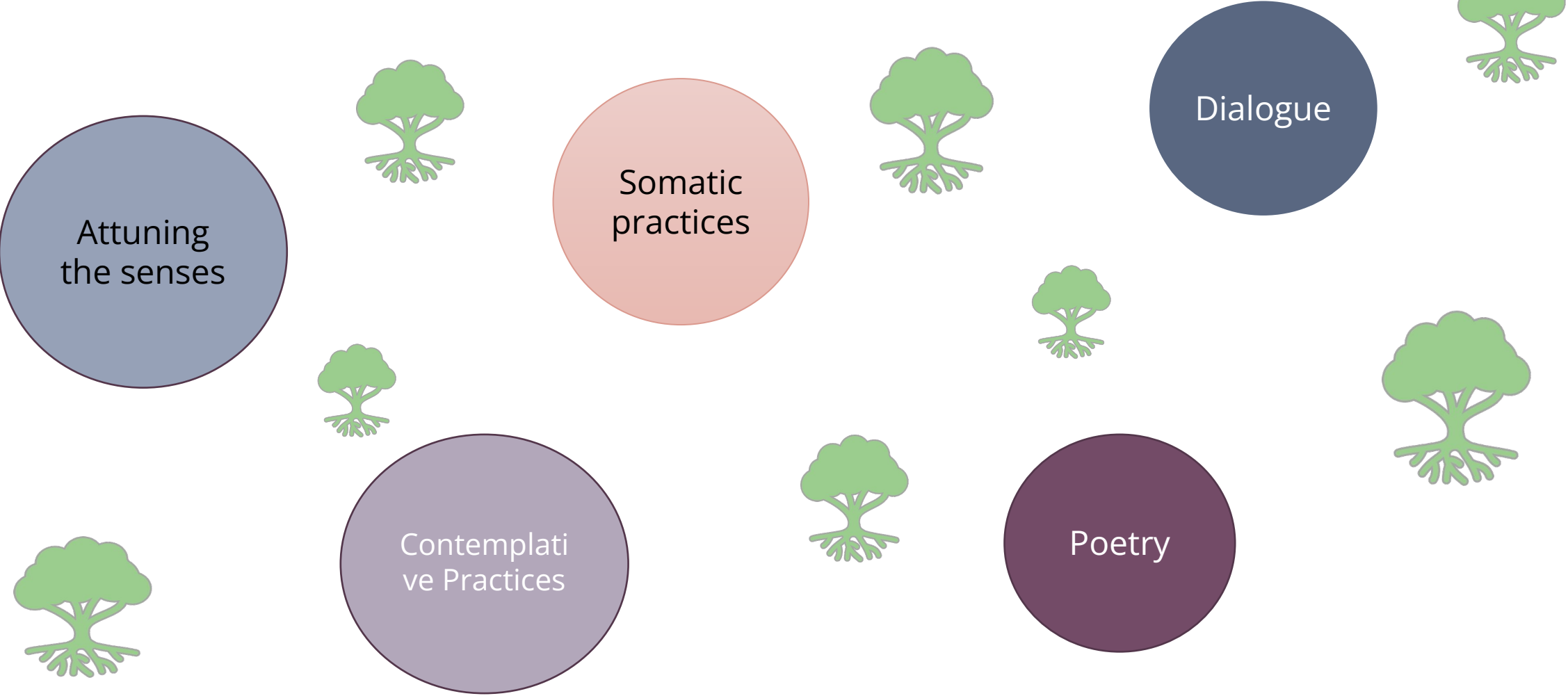
Hive talkin'

The honeybee's waggle dance is among the most impressive pieces of animal communication ever discovered, but has its significance been overblown?

©NewScientist



CULTIVATING MORE-THAN-HUMAN COMMUNITIES – WORKSHOP DESIGN



IMPLEMENTATION



Methodology: a mixed-methods ‘pretest-posttest’ survey design that includes qualitative approaches.

Site: Cotehele, National Trust site in Cornwall, England

Future sites: The Philippines and Japan

REFERENCES

- Jim Cheney and Anthony Weston 'Environmental Ethics as Environmental Etiquette', *Environmental Ethics*, 21(2), (1999) pp. 115-134.
- Judi Dench: My Passion for Trees, 26 Dec 2017, BBC1, <<https://learningonscreen.ac.uk/ondemand/index.php/prog/104A1DFD>> [Accessed 22 Jan 2022].
- United Nations, 'UN Report: Nature's Dangerous Decline 'Unprecedented'', Sustainable Development Goals, 6 May 2019, <https://www.un.org/sustainabledevelopment/blog/2019/05/nature-decline-unprecedented-report>>[10 Jan 2020].
- Sian Sullivan, 'Wild game or soul mates', Landscape, Wilderness and the Wild conference, (Newcastle University, March 2015).
- Sian Sullivan, 'What's ontology got to do with it?', in *Routledge International Handbook of Environmental Anthropology*, ed. by H. Kopnina and E. Shoreman-Ouimet, (London: Routledge, 2016), pp. 155-169 (p.164).



THANK YOU

Lisa Hall | lisa.hall17@bathspa.ac.uk |